

PURA BY ADERA

AT SURREY CENTRAL



ASSIGNMENT OF SALE



INTERIOR

657 SF

EXTERIOR

203 SF

TOTAL

860 SF

FEATURES

- Close to SkyTrain Station
- Near Upcoming UBC Campus
- Spacious Layout
- Ample of Amenities
- Enjoy Quiet Home Technology
- Mass Timber Home

BONUS POINTS

- 5% Deposit Only
- Completion 2025
- Financing Available
- Largest Patio in the Building
- One Year Rental Guarantee with Dedicated Property Manager

BUILDING SMARTER.
LIVING QUIETER.

Built with Adera's proprietary SmartWood®, PURA balances stylish, sophisticated design aesthetics and superior acoustics, with high-performing, sustainable and innovative Mass Timber construction technologies for unparalleled livability that matches the strength and durability of concrete.



CREATING BUILDINGS FOR BETTER LIVES.

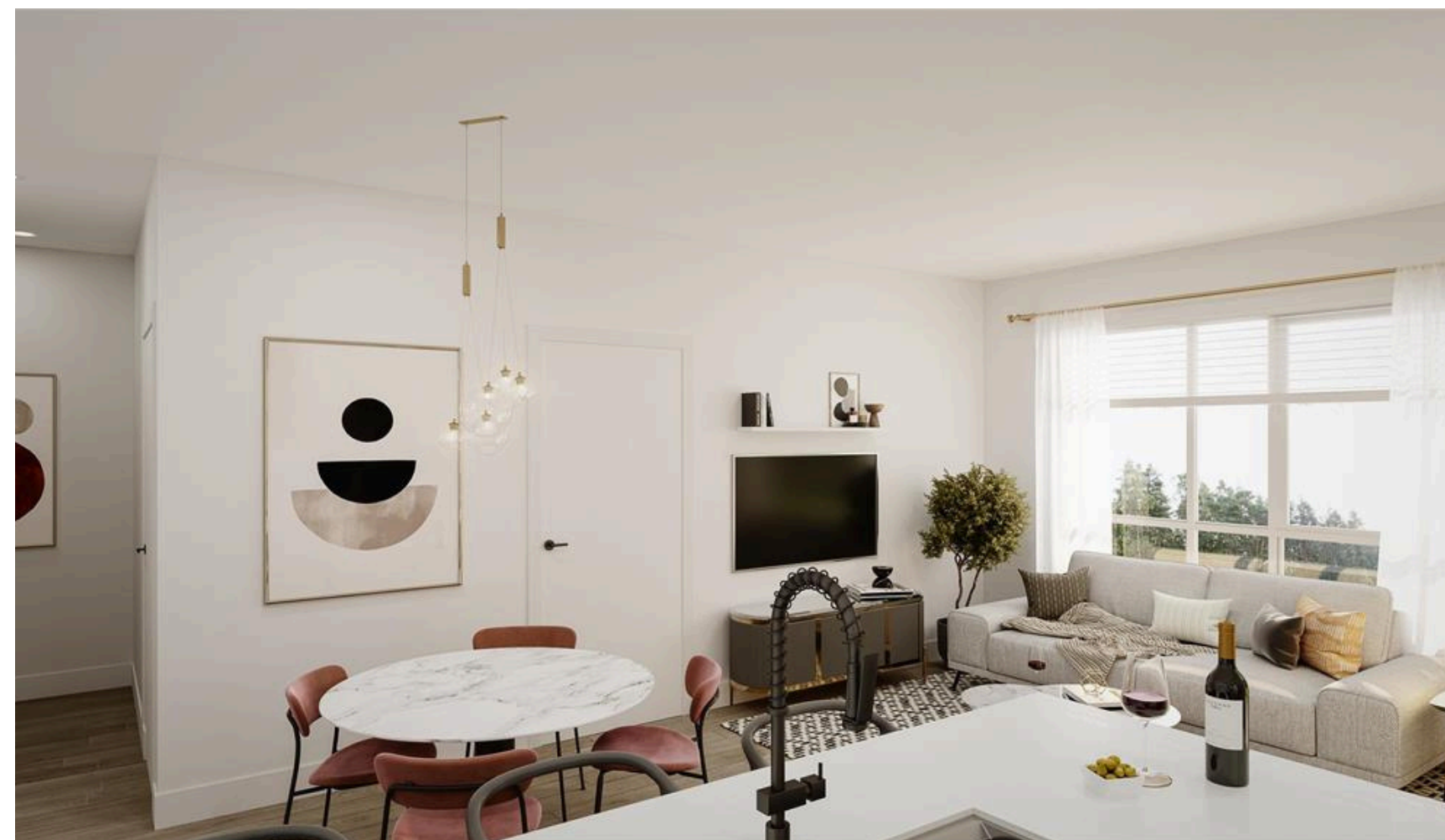
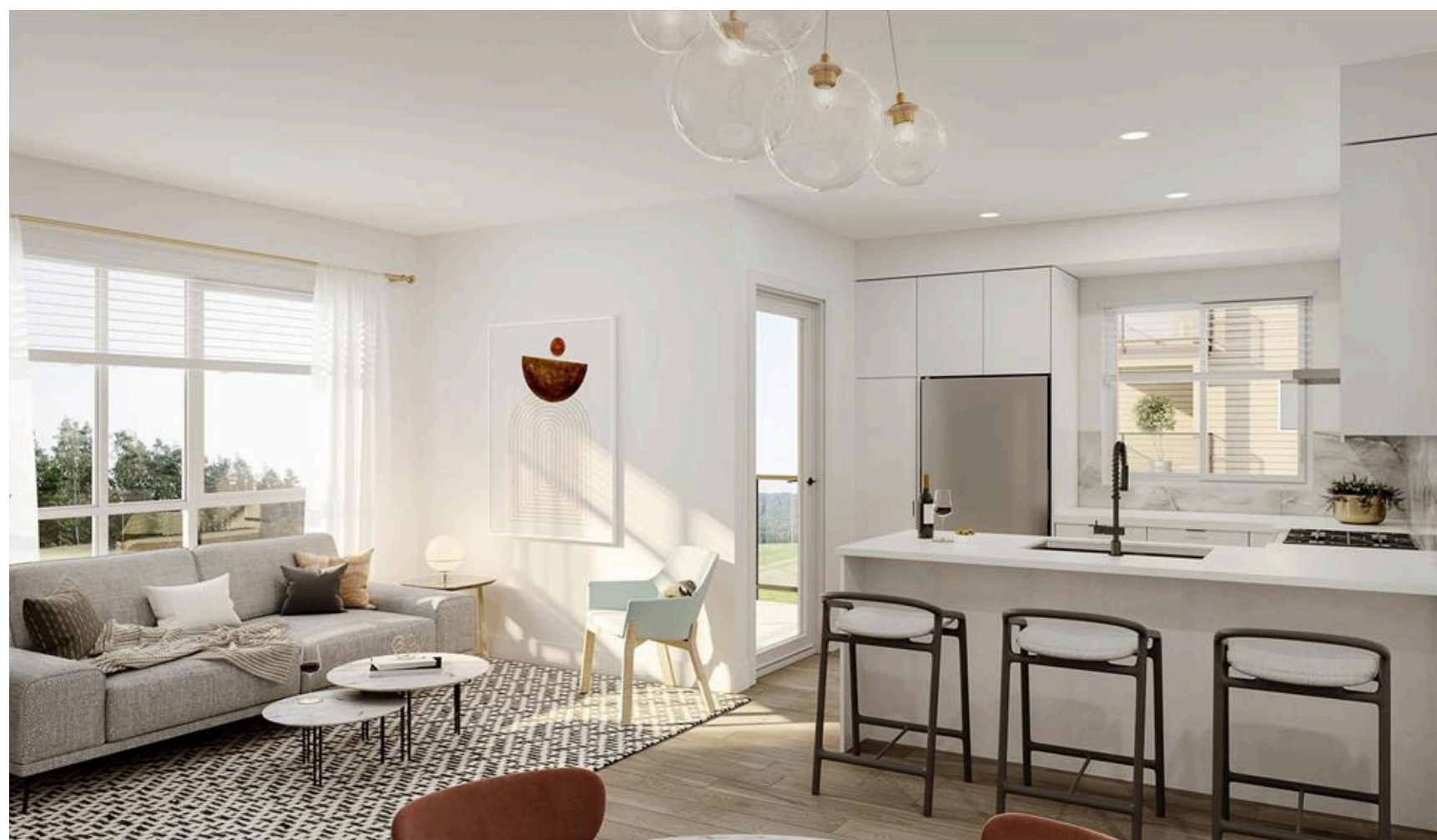
As leaders in innovative, Mass Timber construction, Adera is committed to developing homes that improve the lives of our proud owners. Designed with the future in mind, Adera communities are centered around health, wellness and active lifestyles for our owners and the neighbourhoods they live in.





SPECIFICATIONS

ADDRESS	UNIT 119 13238 105 AVENUE
CITY	SURREY
DEVELOPMENT NAME	PURA BY ADERA
BED	2
BATH	1
PARKING	1
STRATA FEES	TBD
COMPLETION	2025
DEPOSIT	5%
PRICE	635,000



Experience peace and tranquility with QuietHome.

- QuietHome technology provides superior acoustics between you, your neighbours, and the city that surrounds you. Independent tests prove it.
- Acoustically high-performing building technology limits impact and airborne sounds from adjacent homes
- Quiet Home is as quiet as concrete built. Often even quieter
- Special floor and ceiling assemblies increase stability and vibrate less
- Includes acoustical sound mats, sealed gaps and edges, and extra insulation in the wall spaces
- Wood is warmer than concrete, so you'll stay cozy for less cost





A rooftop terrace with modern furniture, a fire pit, and a city skyline in the background. The scene is set during the day with a clear sky. In the foreground, a man and a woman are sitting on a wooden chair with a light-colored cushion, facing each other. To their right, a woman is sitting on a similar chair, looking towards the camera. In the background, there are several tables and chairs, some of which are occupied by people. A large planter box with tall, feathery plants is in the lower left. A fire pit with a fire is visible on the right side. The terrace is surrounded by a low wall and has a view of a city skyline with several high-rise buildings.

Restore your balance with a rooftop retreat.

Mystical mornings as the sun rises. Magical evenings by the fire.

Savour a breath of fresh air, forage for fresh produce, or sip your tea as you unwind on the rooftop terrace. Dining, reading and fireside lounge areas offer a variety of elegant spots to gather and relax.

